

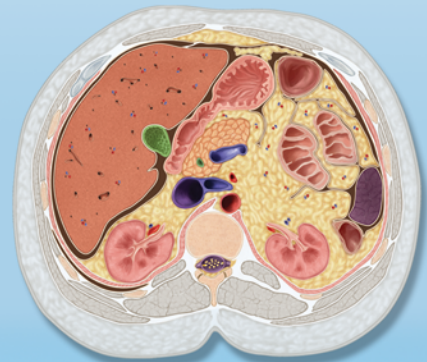
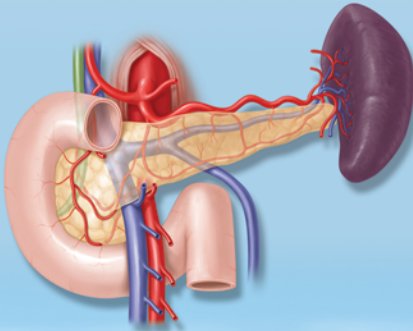
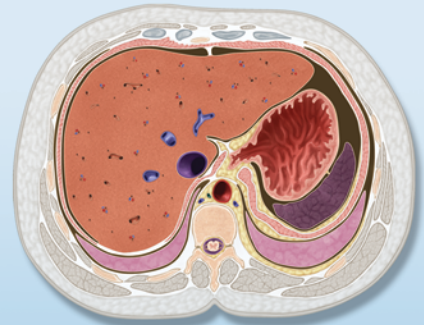
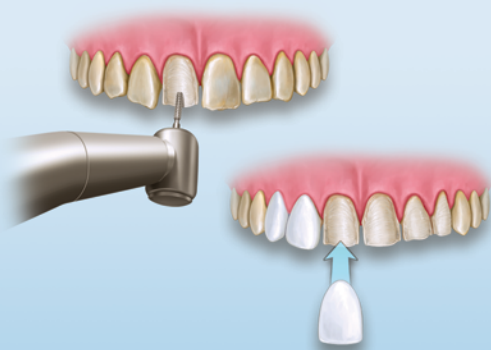
ILLUSTRATION

ANIMATION

3-D GRAPHICS

INTERACTIVE MEDIA

GRAPHIC DESIGN

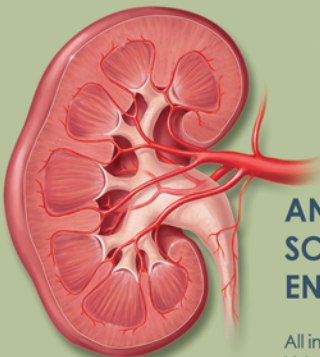


603.252.5894

Kestrel Illustration Studio LLC

www.kestrelstudio.com

William Scavone M.A., C.M.I.
info@kestrelstudio.com



**ANATOMY • PHYSIOLOGY • SURGICAL • BIOLOGICAL • NATURAL
SCIENCE • ENVIRONMENTAL • MEDICAL LEGAL • ORNITHOLOGY •
ENTOMOLOGY • BOTANY • MICROBIOLOGY • DENTAL • EDUCATIONAL**

All images created by William Scavone. The cross-sections of abdomen (top right), duodenum and pancreas (middle left), and kidney (bottom left) are © 2008 Wolters Kluwer Health. All other images are © 2005-2009 William Scavone. All rights reserved.